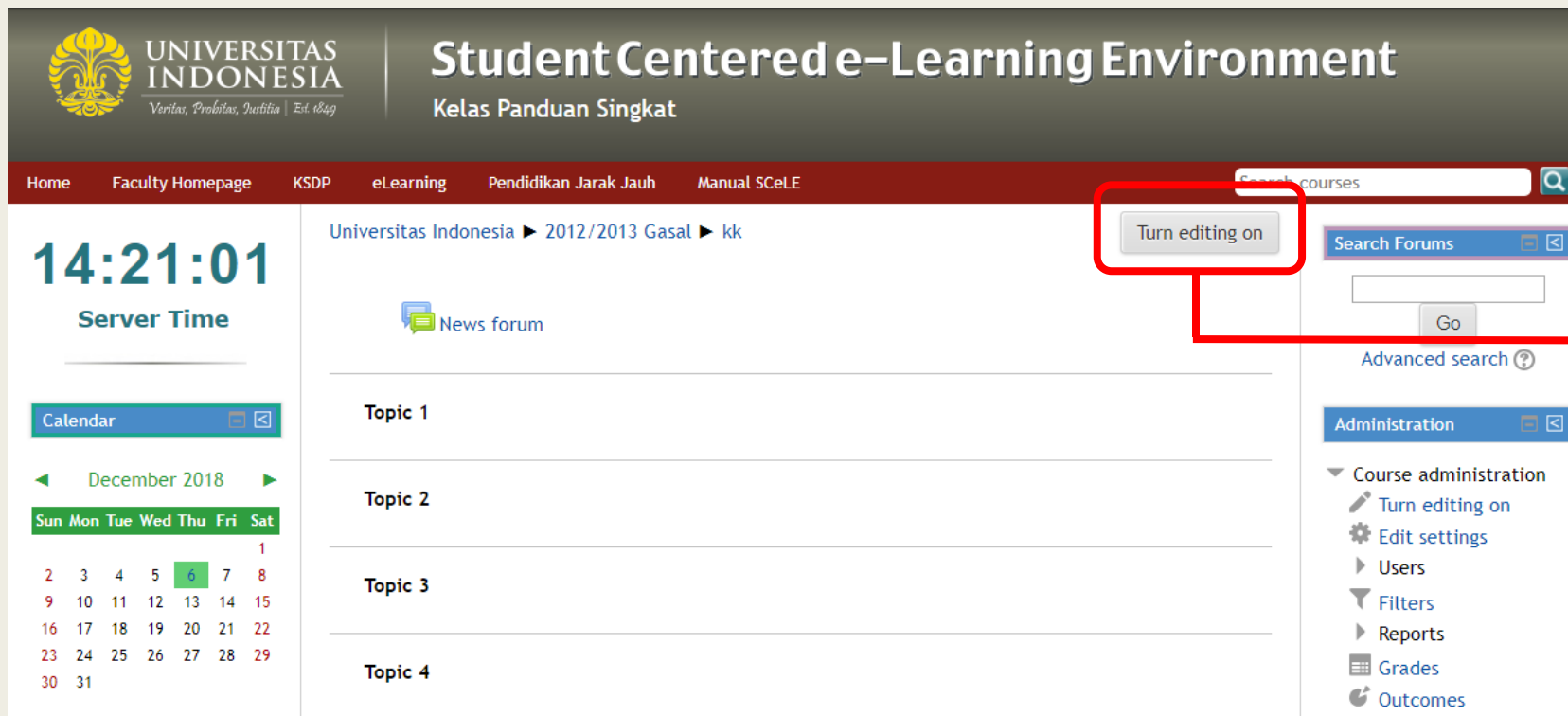


PANDUAN SINGKAT

Memasukkan video di internet ke SCell

Sinta Krisdamayanti, S.Si

> Langkah Pertama

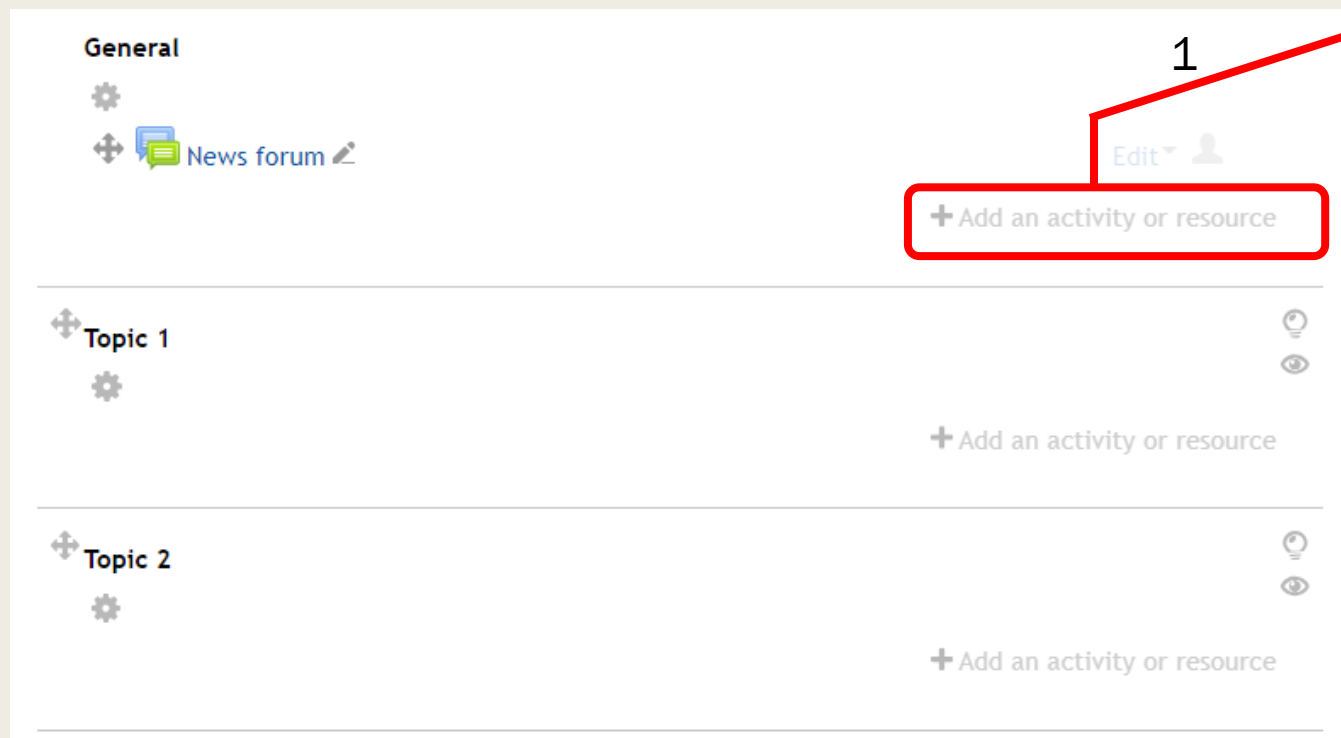


The screenshot shows the user interface of the Student Centered e-Learning Environment. The header includes the Universitas Indonesia logo and the text "Student Centered e-Learning Environment" and "Kelas Panduan Singkat". A navigation bar contains links for Home, Faculty Homepage, KSDP, eLearning, Pendidikan Jarak Jauh, and Manual Scele. A search bar is present with the text "Search courses". The main content area displays "Universitas Indonesia ▶ 2012/2013 Gasal ▶ kk" and a "News forum" section with four topics labeled "Topic 1" through "Topic 4". A "Turn editing on" button is highlighted with a red box. A red arrow points from the text "Pada Kelas Klik Turn editing on" to the button. The right sidebar contains a "Search Forums" section with a search input and a "Go" button, and an "Administration" section with a dropdown menu for "Course administration" containing options like "Turn editing on", "Edit settings", "Users", "Filters", "Reports", "Grades", and "Outcomes".

Pada Kelas
Klik Turn editing on



Klik
“+ Add an activity or resource”



General

News forum

1

+ Add an activity or resource

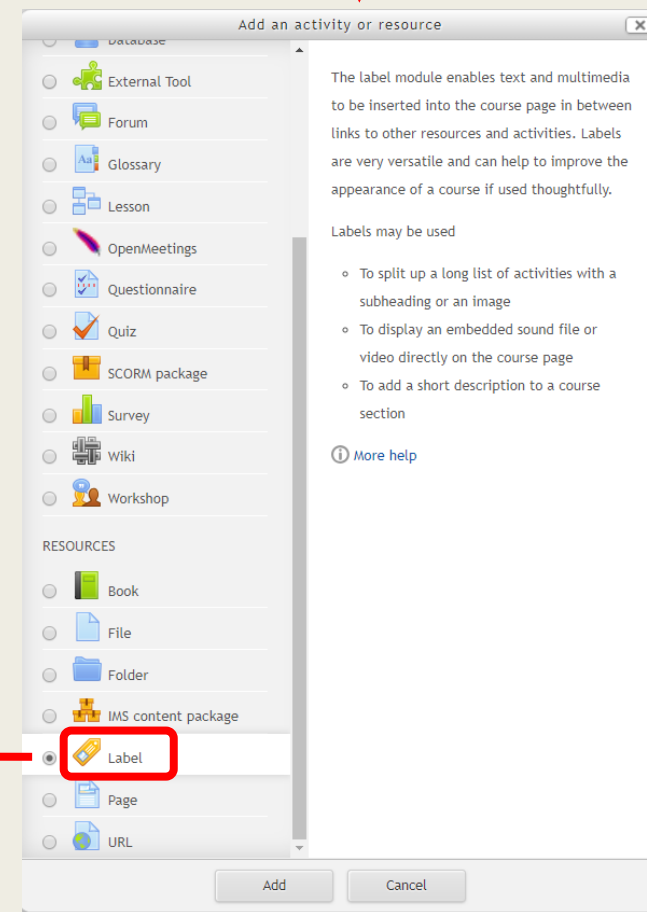
Topic 1

+ Add an activity or resource

Topic 2

+ Add an activity or resource

2



Add an activity or resource

External Tool

Forum

Glossary

Lesson

OpenMeetings

Questionnaire

Quiz

SCORM package

Survey

Wiki

Workshop

RESOURCES

Book

File

Folder

IMS content package

Label

Page

URL

The label module enables text and multimedia to be inserted into the course page in between links to other resources and activities. Labels are very versatile and can help to improve the appearance of a course if used thoughtfully.

Labels may be used

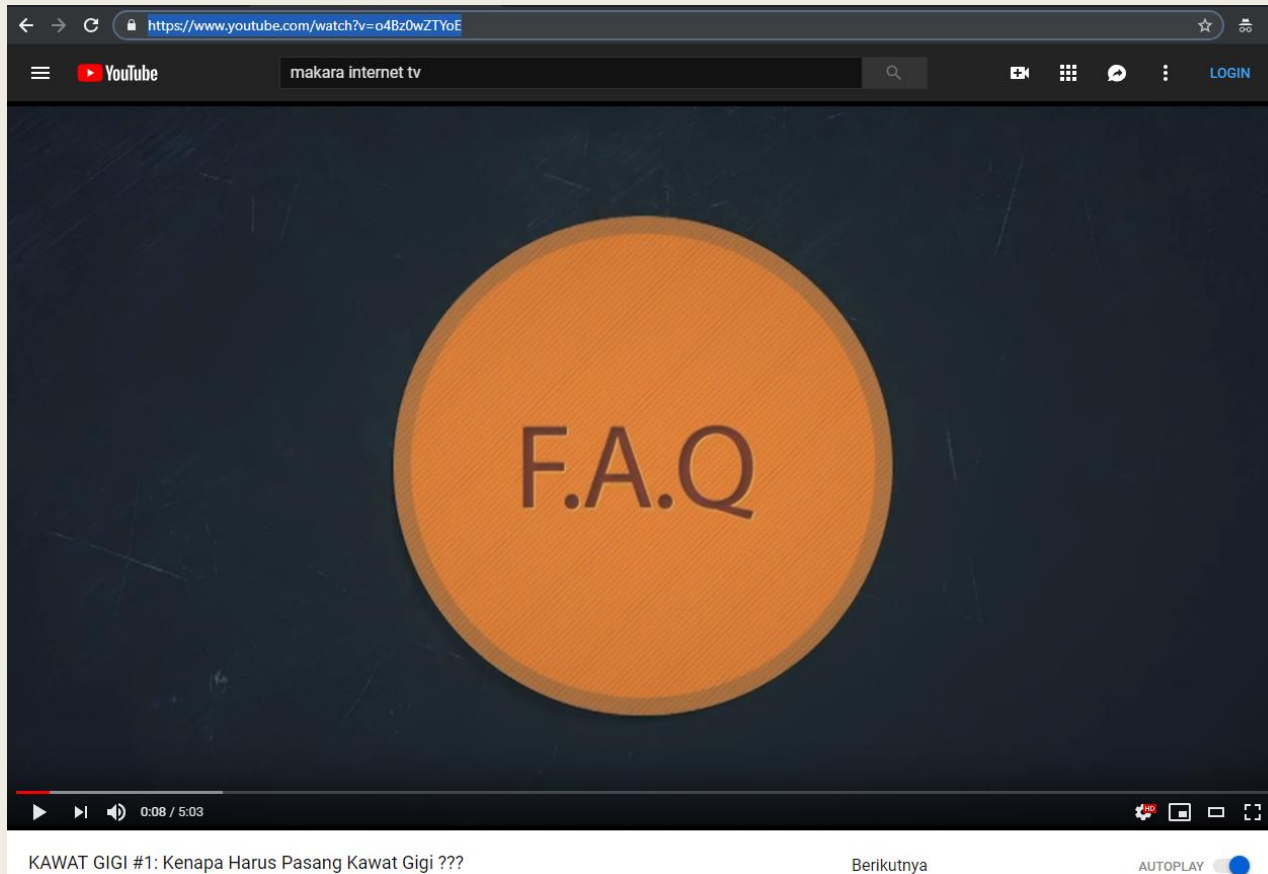
- To split up a long list of activities with a subheading or an image
- To display an embedded sound file or video directly on the course page
- To add a short description to a course section

More help

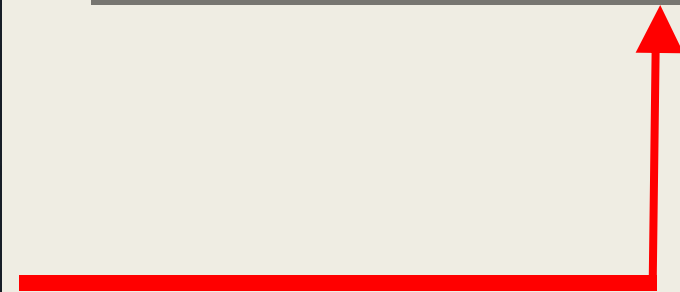
Add Cancel

3

Klik “Label”
pada bagian resources
Lalu Klik “Add” di bagian bawah

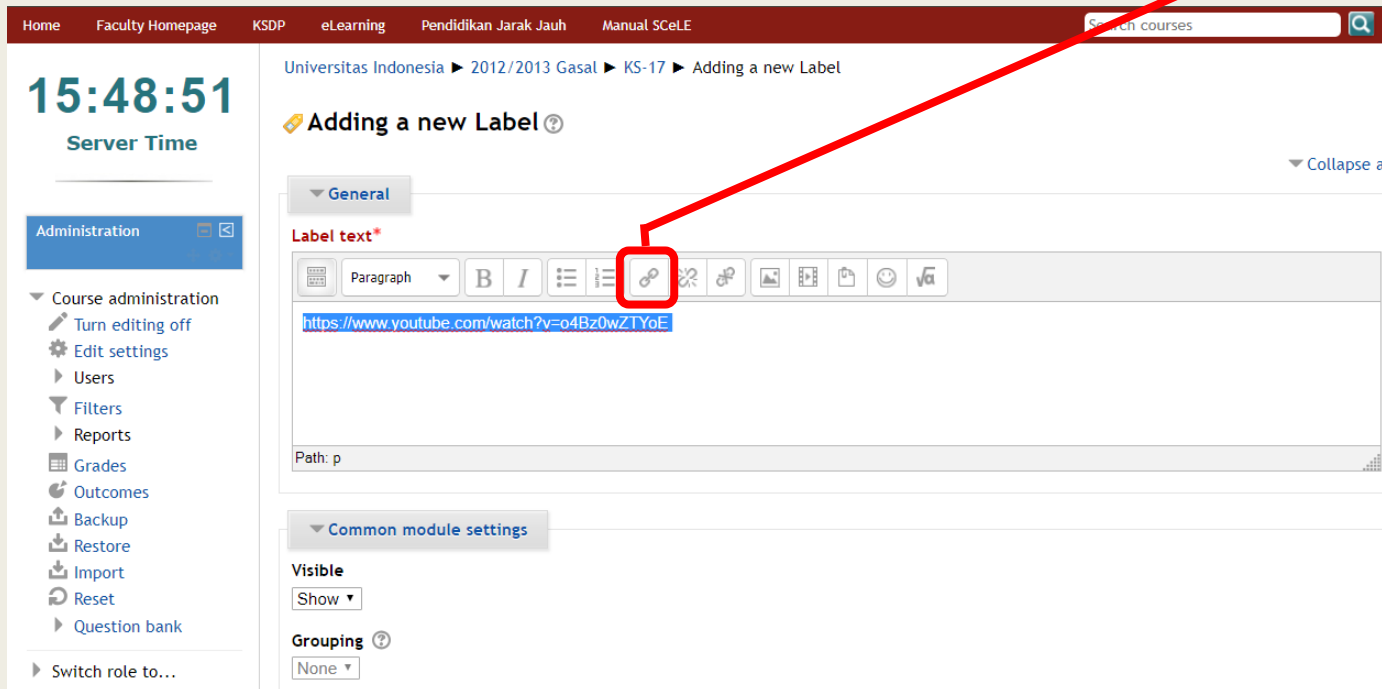


1. Pastikan Video yang akan di tampilkan di SCeLE sudah di simpan di youtube (www.youtube.com)
2. Copy url link pada video yang di maksud, seperti contoh di bawah ini: "<https://www.youtube.com/watch?v=o4Bz0wZTYoE>"
3. Copy url link bisa menggunakan ctrl+c
4. Lalu kembali ke laman kelas di scele.ui.ac.id





1. Paste (ctrl+v) pada kolom label yang di block (seperti contoh)
2. Klik "insert/edit link"



Home Faculty Homepage KSDP eLearning Pendidikan Jarak Jauh Manual SCeLE Search courses

15:48:51 Server Time

Administration

Course administration

- Turn editing off
- Edit settings
- Users
- Filters
- Reports
- Grades
- Outcomes
- Backup
- Restore
- Import
- Reset
- Question bank

Switch role to...

Universitas Indonesia ▶ 2012/2013 Gasal ▶ KS-17 ▶ Adding a new Label

Adding a new Label

General

Label text*

Paragraph B I [Link icon] [Image icon] [Video icon] [Audio icon] [Text icon] [Text icon]

<https://www.youtube.com/watch?v=o4Bz0wZTYoE>

Path: p

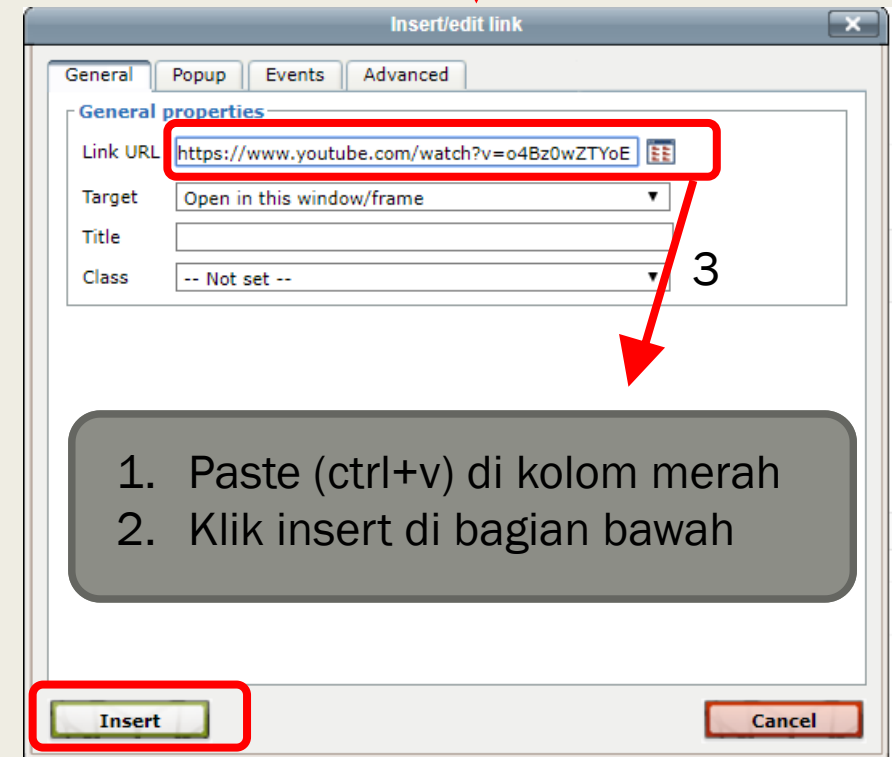
Common module settings

Visible

Show

Grouping

None



Insert/edit link

General Popup Events Advanced

General properties

Link URL <https://www.youtube.com/watch?v=o4Bz0wZTYoE>

Target Open in this window/frame

Title

Class -- Not set --

Insert Cancel

1. Paste (ctrl+v) di kolom merah
2. Klik insert di bagian bawah



Universitas Indonesia ▶ 2012/2013 Gasal ▶ KS-17 ▶ Adding a new Label

Adding a new Label ?

▼ Collapse all

▼ General

Label text*

Format ▼ B I [List Icons] [Link Icon] [Image Icon] [Video Icon] [Attachment Icon] [Smiley Icon] [Equation Icon]

<https://www.youtube.com/watch?v=o4Bz0wZTYoE>

Path: a

▼ Common module settings

Visible
Show ▼

Grouping ?
None ▼

Available for group members only ?

Save and return to course Cancel

There are required fields in this form marked *.

Klik “save and return to course”

Kemudian tunggu beberapa saat, Video akan muncul di laman SCeLE.



The screenshot displays the Student Centered e-Learning Environment (SCeLE) interface. At the top, the Universitas Indonesia logo and name are visible, along with the text "Student Centered e-Learning Environment" and "Kelas Sinta". The navigation menu includes "Home", "Faculty Homepage", "KSDP", "eLearning", "Pendidikan Jarak Jauh", and "Manual SCeLE". A search bar for courses is located on the right. The main content area shows a video player with the title "Kawat Gigi (Part 1)" and a play button. The video player is part of a "General" section, which also includes a "News forum" link. The sidebar on the right contains a "Search Forums" section and an "Administration" section with various options like "Turn editing off", "Activity chooser off", "Edit settings", "Users", "Filters", "Reports", "Grades", "Outcomes", "Backup", "Restore", "Import", "Reset", "Question bank", "Switch role to...", and "My profile settings". The bottom left corner shows the "Online Users" section, indicating "(last 5 minutes)".



Referensi:

<http://scele.ui.ac.id>

<https://www.youtube.com/watch?v=o4Bz0wZTYoE>

[FAQ - MITV Universitas Indonesia](#)

Kritik dan saran dapat disampaikan melalui email:

sinta.krisdamayanti@ui.ac.id

Terimakasih